

Backing up and restoring HP SIM 5.2 or greater data files in a Windows environment



Abstract.....	2
Introduction.....	2
Saving and restoring data files.....	2
Saving and restoring files where HP SIM is installed using a Microsoft SQL database.....	3
Saving HP SIM configuration files and SQL server data files.....	3
Restoring HP SIM configuration files and SQL server data files from a backup.....	5
Saving and restoring files where HP SIM is installed using Microsoft SQL Server 2005 Express.....	7
Saving HP SIM configuration files and SQL server data files:.....	7
Saving HP SIM configuration and HP SIM database using Microsoft SQL Enterprise Manager.....	7
Backing up the HP SIM database:.....	8
Restoring HP SIM configuration files and SQL server 2005 Express data files from a backup.....	9
Saving and restoring files for an Oracle database.....	11
Saving data files for use with Oracle.....	11
Restoring data files for use with Oracle.....	12
For more information.....	14

Abstract

HP Systems Insight Manager (HP SIM) is a flexible management utility for an enterprise environment employing HP ProLiant, HP BladeSystem, HP StorageWorks, and HP Integrity solutions. The system database and configuration files used by HP SIM should be backed up regularly to allow recovery from a catastrophic system failure or an instance of corrupted files. This paper provides step-by-step instructions to back up the HP SIM data files and perform a restore if a software reinstallation becomes necessary on a system running Microsoft Windows operating system.

This paper assumes that readers:

- Are familiar with IT administration policies and procedures
- Are familiar with the operating system platform implemented by their data center
- Have reviewed the *HP SIM 5.2 Installation and Configuration Guide for Microsoft Windows systems*

Introduction

HP Systems Insight Manager (HP SIM) is the foundation for the HP unified infrastructure management strategy. HP SIM provides hardware-level management for HP ProLiant, HP Integrity, and HP 9000 servers; HP BladeSystems; and HP StorageWorks MSA/EVA/XP storage arrays – all from a single console in the data center or in a remote location.

Server and storage information for a network is kept in a database compiled by HP SIM. The system administrator should back up this database and associated configuration files regularly to allow for a smooth reinstallation or restore process if a catastrophic equipment or software failure should occur.

Additional reference data is available in the form of on-line man pages, which provide quick command-line access to specific topics such as HP SIM commands and parameters. The HP SIM documents listed previously, the man pages, and additional HP SIM support documents are available at the HP SIM information library at the following URL:

<http://h18004.www1.hp.com/products/servers/management/hpsim/infolibrary.html>.

Note: This paper describes the backup and restoration of a “same system” for fault insurance purposes only. It does not apply to system migration or software upgrades.

For migration information, refer to the migration white papers at

<http://h18013.www1.hp.com/products/servers/management/hpsim/infolibrary.html>.

Saving and restoring data files

HP SIM can use one of three databases on a system running the Microsoft® Windows® operating system:

- Microsoft SQL Server Database Engine
- Microsoft SQL Server 2005 Express
- Oracle® database
- Microsoft SQL Server 2005
- Microsoft SQL Server 2008

Saving and restoring files where HP SIM is installed using a Microsoft SQL database

This section describes saving (backing up) and restoring files used with a Microsoft SQL database.

Saving HP SIM configuration files and SQL server data files

Microsoft SQL Enterprise Manager has built-in utilities for backing up the database, including an automated procedure. HP recommends viewing the Help files provided by the SQL Enterprise Manager to gain a complete understanding of this procedure.

Note: HP recommends stopping the HP SIM service to ensure that the discovery and data collection processes do not occur during the save; however, you can leave the HP SIM service running during the save process.

To save HP SIM configuration and HP SIM database using Microsoft SQL Enterprise Manager, proceed as follows:

1. Using the file management tool of your choice, save the directories and/or files listed in Table 1. For each occurrence of "<SIM>", substitute the actual path name where HP SIM is installed (such as C:\Program Files\HP\System Insight Manager).

Note: You must use a tool that preserves file permissions (such as the Windows Backup tool) while saving directories and files.

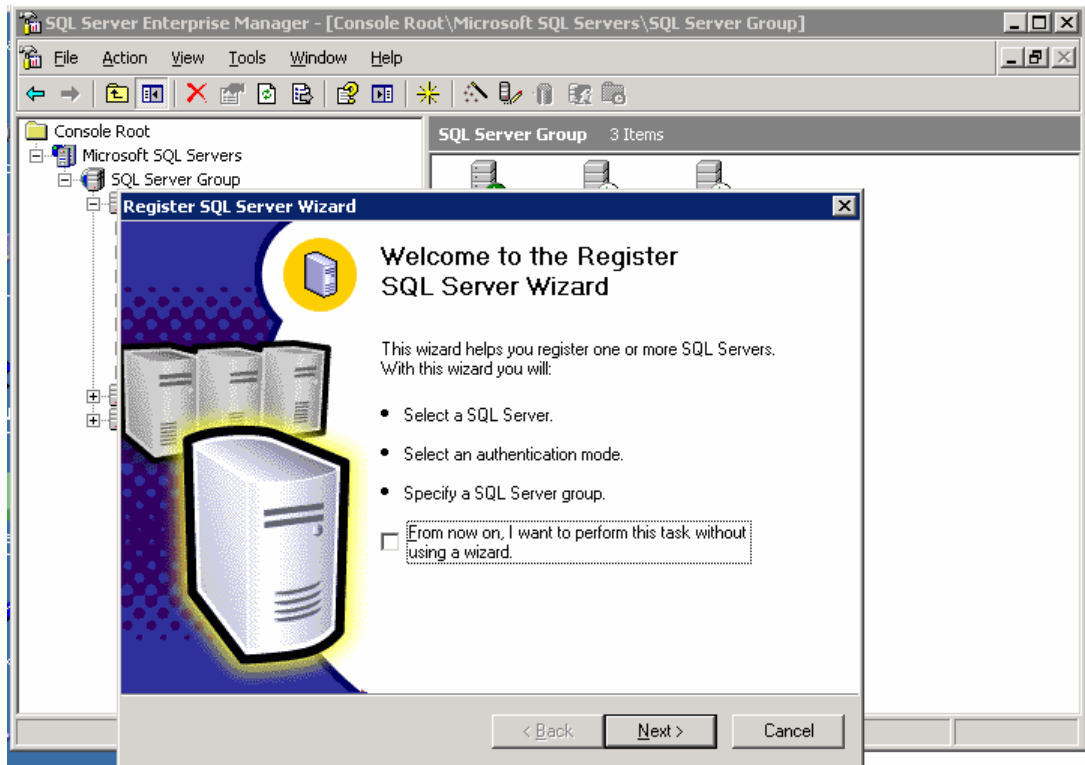
Table 1: Configuration files to back up

Directory or file	Description
<SIM>\config\	Directory of configuration files
hp\sslshare\	Shared openSSL certificate directory
<SIM>\logs\mx.log	Audit log file
<SIM>\patch	Program updates (required if you want to reinstall HP SIM), this may be empty
bin\servercert.pem	Certificate used by the Command Line Interface (CLI)
bin\clclientconfig.cfg	CLI configuration file
<SIM>\installpsp	(if existing)
<SIM>\swmaint	(if Existing)
<SIM>\output	(optional) Contains job result output

2. Save any existing user-supplied (custom) files contained in the HP SIM directory tree such as tool definition files (TDEFs), Management Information Bases (MIBs), login prompt, actions, etc.
3. Save the OpenSSH Keys from the <OpenSSH Install path>\etc folder.
4. Save any custom support packs used by the Version Control Repository manager (VCRM).
5. Save any data files corresponding to any plug-in utilities used with HP SIM. See the documentation of the applicable plug-in utility for actual file names/locations.
6. From the Windows **Start** menu, open Microsoft SQL Enterprise Manager.
7. In the tree displayed in the left panel, expand the **Microsoft SQL Servers** branch and **SQL server group**. If the server is not listed where the HP SIM database is located, you can invoke the Register

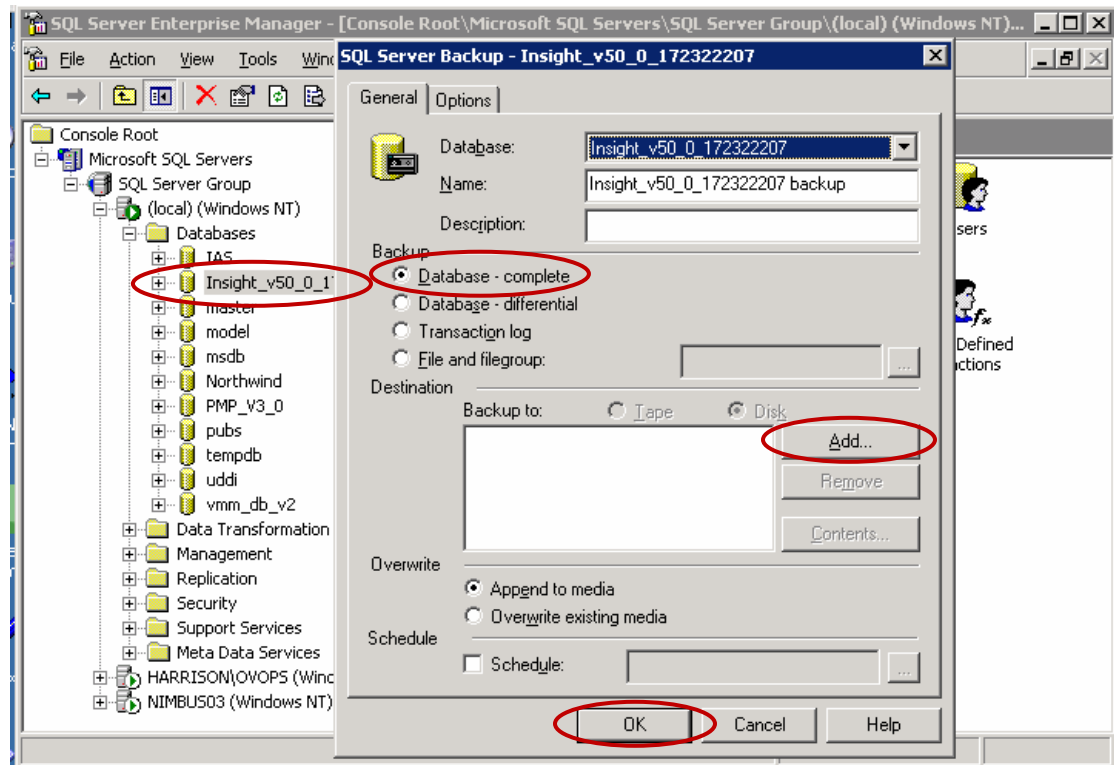
SQL Server Wizard by right-clicking **SQL server group** and selecting **New SQL Server Registration** to bring up the Register SQL Server Wizard window (Figure 1). This procedure assumes the desired server is already listed and that the wizard is not required.

Figure 1: Register SQL Server Wizard window



8. Select the server where the HP SIM database is located. From the **Tools** menu at the top, select **Backup database**. In the dialog box that appears, select the database named **Insight_v***, and select **Database-complete** as the backup option.

Figure 2: SQL Server Backup window



9. In the **Destination** field, click **Add**, select a location (such as disk or tape) for storing the backup copy of database, and then click **OK** to initiate the backup.

Restoring HP SIM configuration files and SQL server data files from a backup

1. If reinstalling HP SIM, for instructions refer to the *HP Systems Insight Manager 5.3 Installation and Configuration Guide for Microsoft Windows*, available at the following URL: <http://h18013.www1.hp.com/cpq-products/servers/management/hpsim/infolibrary.html>. If not performing a reinstallation of HP SIM, then proceed to step 5.

Note: You must reinstall HP SIM with the same user account used previously. If a local account was used, the host name must also remain the same.

2. Reinstall the WMI mapper, OpenSSH (and previous keys used), and SMH components if needed.
3. Reinstall any backup up custom files (TDEFs, MIBs, login prompt, and other actions) under the HP SIM directory tree, and any custom support packs used by VCRM.

Note: The HP SIM installation procedure includes loading VCRM on a Windows CMS.

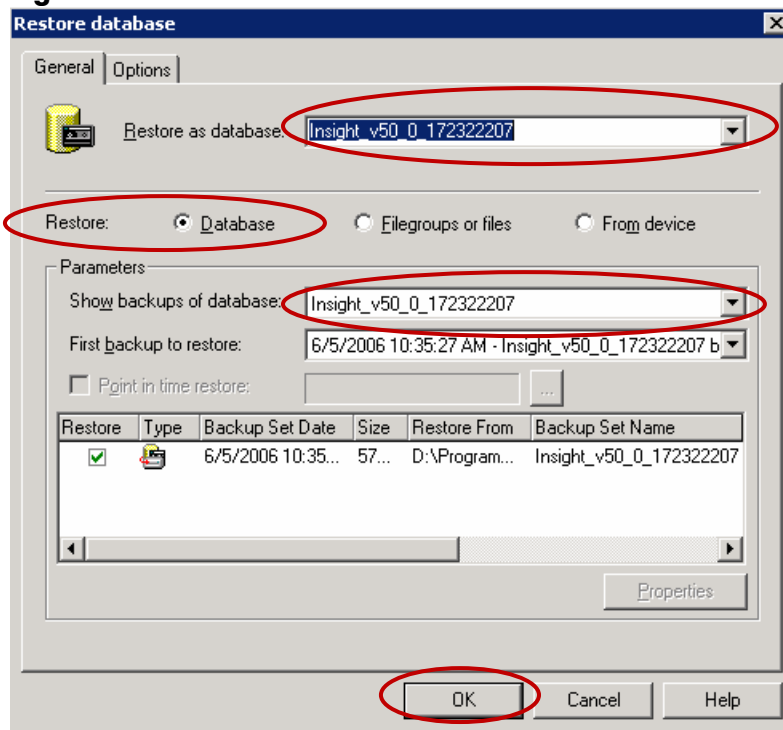
4. Reinstall any plug-in utilities (and associated files and databases) used with HP SIM. You can reinstall using HP SIM integrated installer, the management DVD, or stand alone installer.
5. Stop the HP SIM Service if it is running, along with any HP SIM plug-in applications such as HP Performance Management Pack.

- Using the file management tool of your choice, restore the directories and files listed in Table 1. For each occurrence of <SIM>, substitute the actual path name where HP SIM is installed. If offered, be sure that the **Always replace the file on disk** option is selected.

Note: You must use a tool that preserves file permissions (such as the Windows Backup tool) while restoring directories and files.

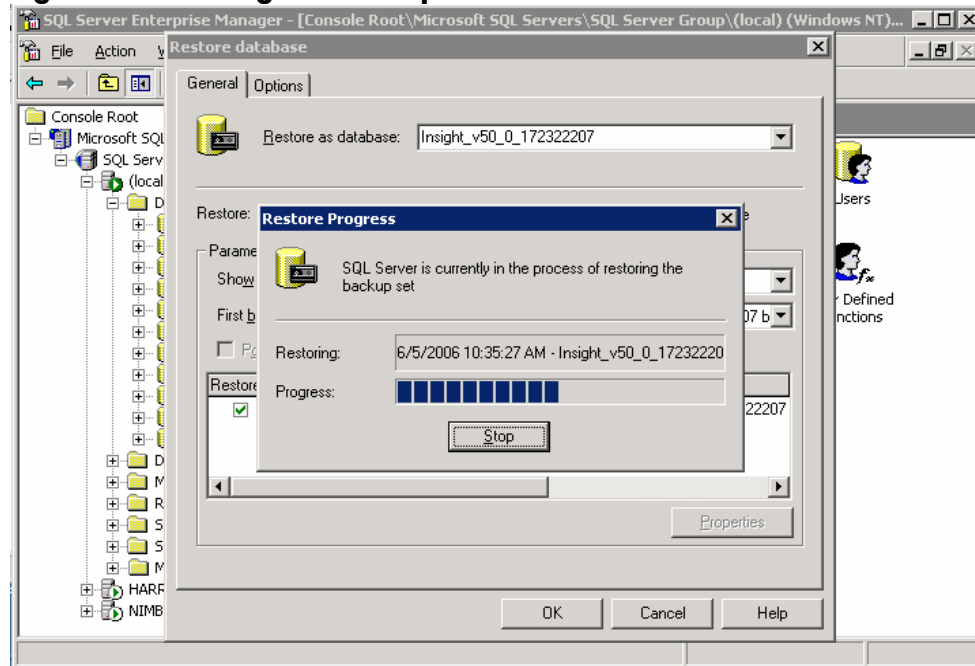
- From the Windows **Start** menu on a Windows console, **open Microsoft SQL Enterprise Manager**.
- In the tree displayed in the left panel, expand the **Microsoft SQL Servers** branch and **SQL Server** group.
- Select the server where the HP SIM database is located. From the **Tools** menu, select **Restore Database**. The **Restore Database** box appears as displayed in Figure 3.

Figure 3: Restore Database box



- From the **Restore as Database** list, select the name of the restored HP SIM database (such as *Insight_v**), and then select **Database** as the type of Restore.
- From the **Show backups of database** list, choose the backup set to use, and then click **OK**. The database is restored with a dialog box indicating the progress as shown in Figure 4.

Figure 4: Restoring the backup set



12. Open the command line window and type `mxconfigrepo -c` to check for database errors. Use the command `mxconfigrepo -f` to fix any errors, and run the command `mxconfigrepo -c` once again as a final check.
13. Start the HP SIM service and any plug-in application.

Saving and restoring files where HP SIM is installed using Microsoft SQL Server 2005 Express, Microsoft SQL Server 2005, or 2008

Microsoft SQL Server 2005 Express allows backing up both data files.

Install SQL server client components.

Note: Go to: <http://www.microsoft.com/downloads/details.aspx?FamilyId=C243A5AE-4BD1-4E3D-94B8-5A0F62BF7796&displaylang=en> to download client components.

Saving HP SIM configuration files and SQL server data files:

Microsoft SQL Server Enterprise Manager has built-in utilities for backing up the database, including an automated procedure. HP recommends viewing the help files provided by the SQL Enterprise Manager to gain a complete understanding of this procedure.

Note: HP recommends stopping the HP SIM service to ensure that the discovery and data collection processes do not occur during the save; however, you can leave the HP SIM service running during the save process if desired.

Saving HP SIM configuration and HP SIM database using Microsoft SQL Enterprise Manager

1. Using the file management tool of your choice, save the directories and files listed in Table 1. For each occurrence of <SIM>, substitute the actual path name where HP SIM is installed (such as `C:\Program Files\HP\System Insight Manager`).

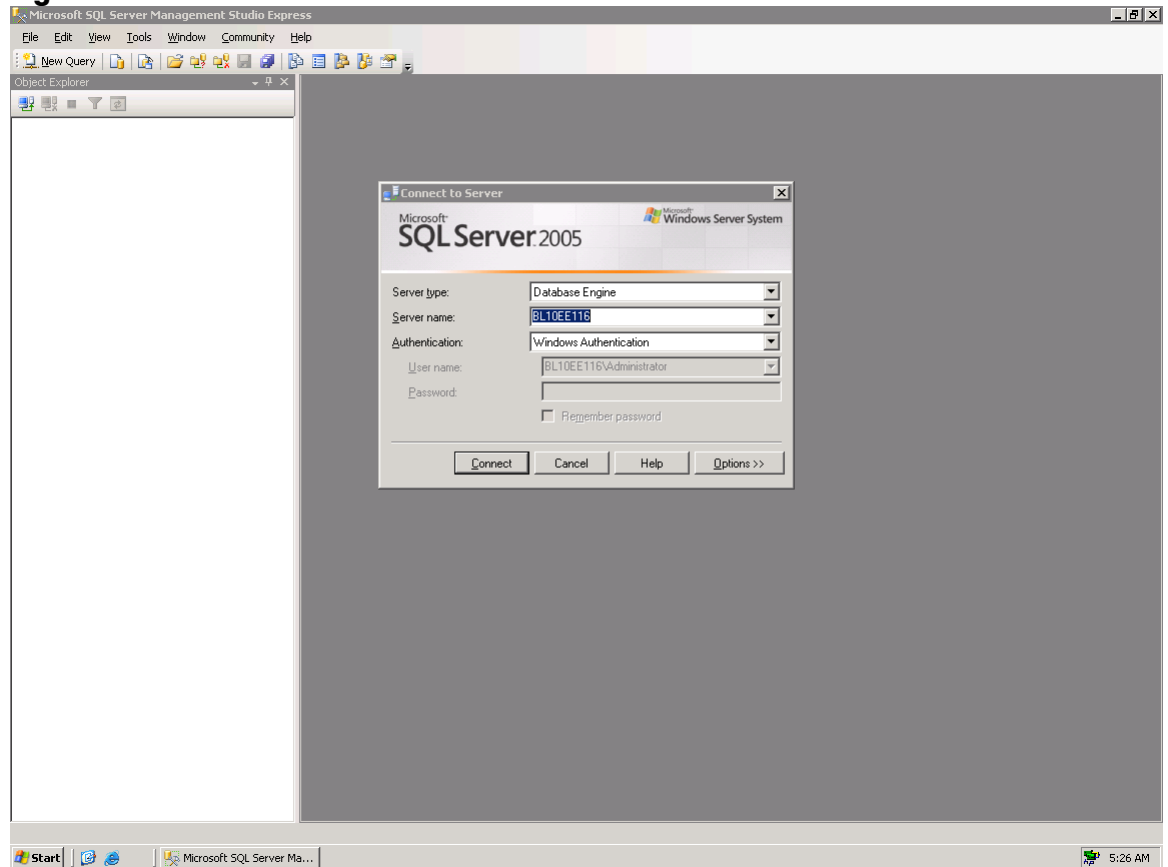
Note: You must use a tool that preserves file permissions (such as the Windows Backup tool) while saving directories and files.

2. Save any existing user-supplied (custom) files contained in the HP SIM directory tree such as tool definition files (TDEFs), Management Information Bases (MIBs), login prompt, actions, etc.
3. Save the OpenSSH Keys from the <OpenSSH Install path>\etc folder.
4. Save any custom support packs used by the Version Control Repository manager (VCRM).
5. Save any data files corresponding to any plug-in utilities used with HP SIM. See the documentation of the applicable plug-in utility for actual file names/locations.

Backing up the HP SIM database:

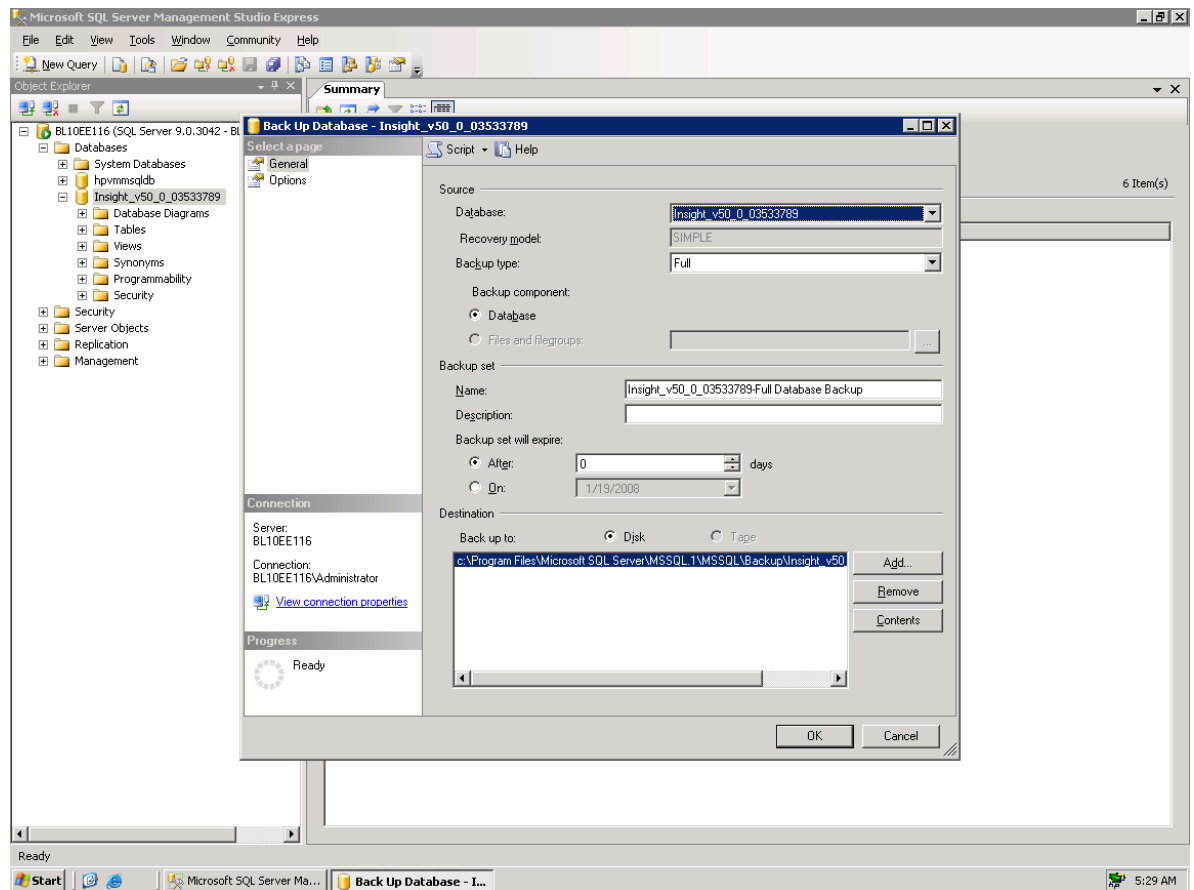
1. From the Windows, select **Start>Microsoft SQL Server 2005>SQL Server Management Studio Express**.
2. The **SQL Server 2005** window is displayed as in Figure 5.

Figure 5:



3. Click on **Connect**.
4. Click on **Database** , select the database named **Insight_v*** right click on **Insight_v*->tasks->backup** a window pops up as in figure 6.
5. In the destination field, click **Add**, select a location (such as disk or tape) for storing the backup copy of database, and then click **OK** to initiate the backup.

Figure 6



Restoring HP SIM configuration files and SQL server 2005 Express data files from a backup

1. If reinstalling HP SIM, for instructions refer to the *HP Systems Insight Manager 5.3 Installation and Configuration Guide for Microsoft Windows*, available at the following URL: <http://h18013.www1.hp.com/cpq-products/servers/management/hpsim/infolibrary.html>. If not performing a reinstallation of HP SIM, then proceed to step 5.

Note: You must reinstall HP SIM with the same user account used previously. If a local account was used, the host name must also remain the same. For more information about renaming the host name, see:

http://h10018.www1.hp.com/wwsolutions/misc/hpsim-helpfiles/hpsim_52_migratingNewSystem.pdf. Perform the remaining steps after the backup or restore is complete.

2. Reinstall the WMI mapper, OpenSSH (and previous keys used), and SMH components if needed.
3. Reinstall any backup up custom files (TDEFs, MIBs, login prompt, and other actions) under the HP SIM directory tree, and any custom support packs used by VCRM.

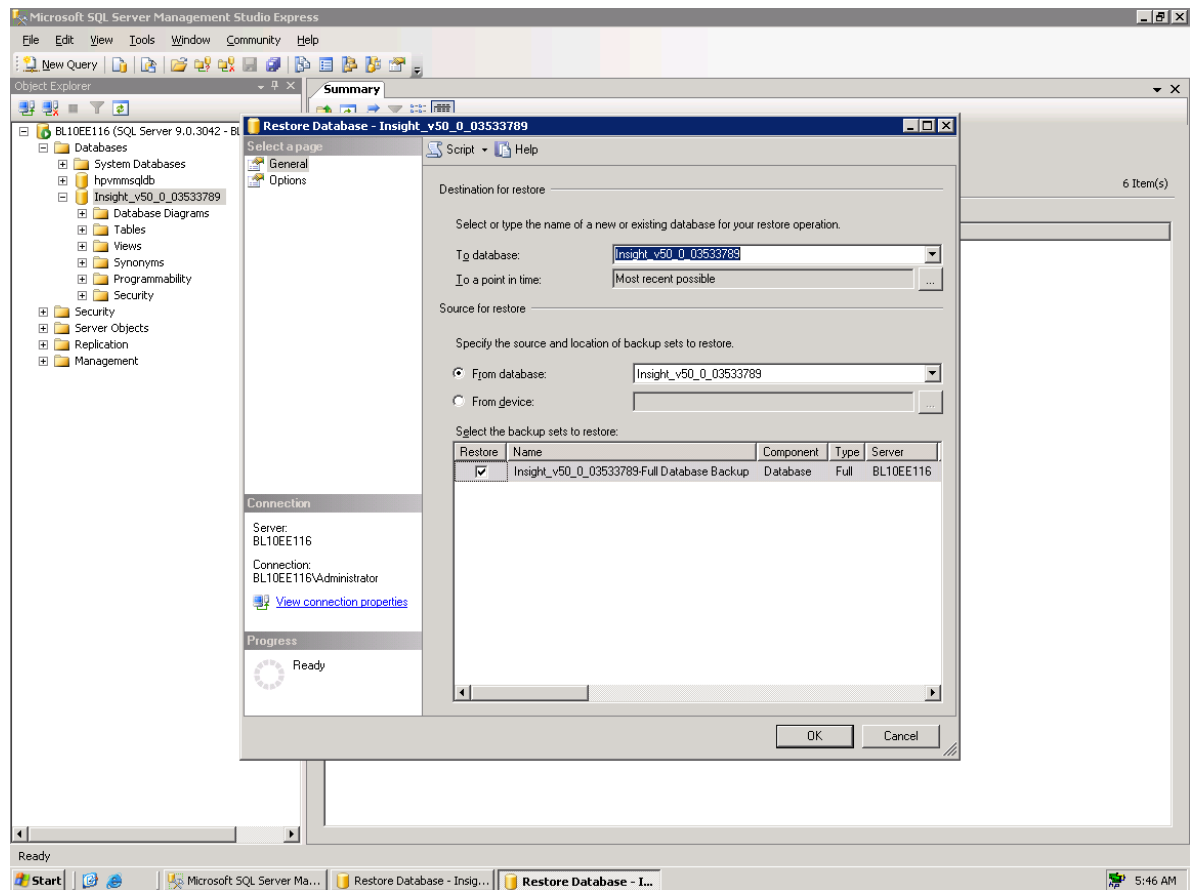
Note: The HP SIM installation procedure includes loading VCRM on a Windows CMS.

4. Reinstall any plug-in utilities (and associated files and databases) used with HP SIM. You can reinstall using HP SIM integrated installer, the management DVD, or stand alone installer.

5. Stop the HP SIM Service if it is running, along with any HP SIM plug-in applications such as HP Performance Management Pack.
6. Using the file management tool of your choice, restore the directories and files listed in Table 1. For each occurrence of <SIM>, substitute the actual path name where HP SIM is installed. If offered, be sure that the **Always replace the file on disk** option is selected.

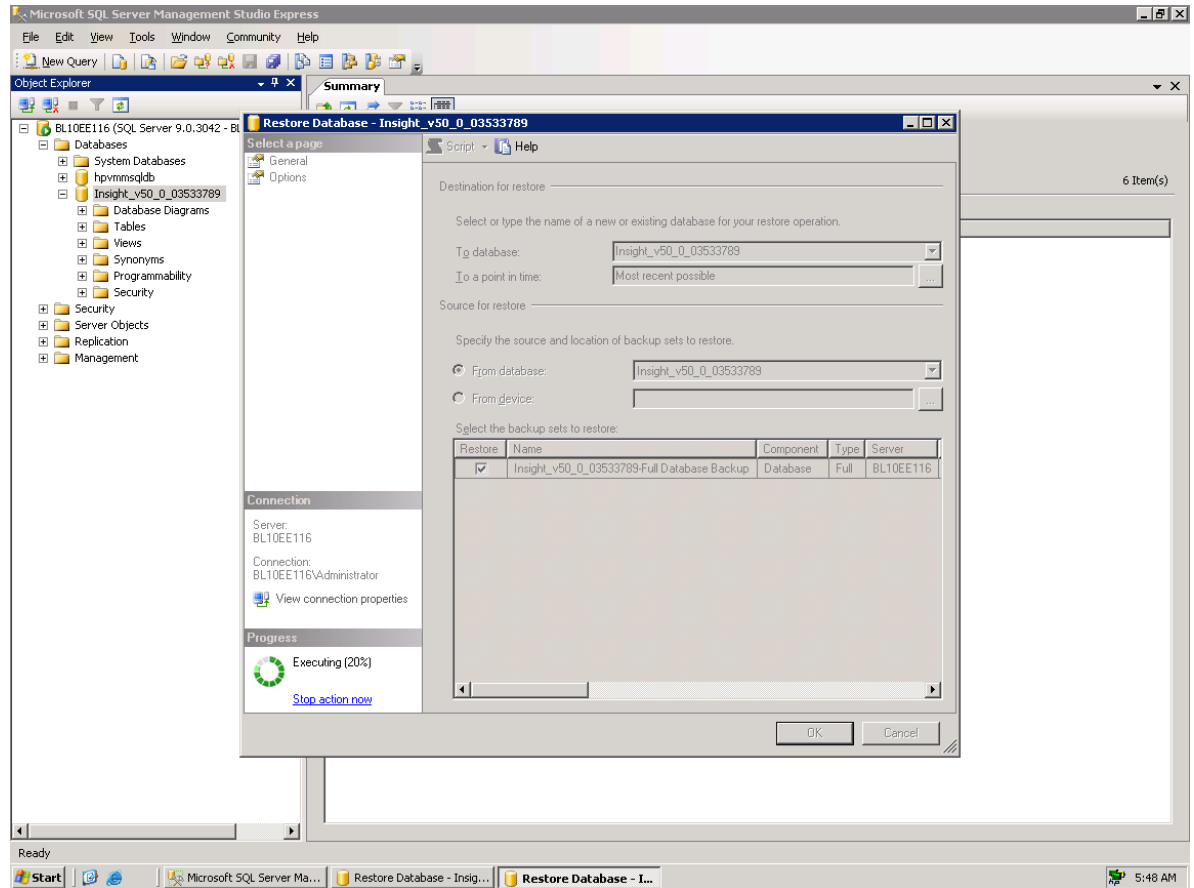
Note: You must use a tool that preserves file permissions (such as the Windows Backup tool) while restoring directories and files.
7. Run **mxgetdbinfo** on the HP SIM system and make note of the database name used by HP SIM.
8. From the Windows, select **Start>Microsoft SQL Server 2005>SQL Server Management Studio Express**.
9. The SQL Server Management Studio Express console is displayed as in Figure 5.
10. Click on **Connect**.
11. Delete the database noted in step 7.
12. Create a new database with the same name as noted in step 7.
13. Expand the **Database** tree, select the database created in step 12, and right click on **tasks>restore>database**.

Figure 7



14. Click **OK** to initiate restore.

Figure 8



15. Open the command line window and enter `mxconfigrepo -c` to check for database errors. Use the command `mxconfigrepo -f` to fix any errors.
16. Run the command `mxconfigrepo -c` again as a final check.
17. Start the HP SIM service and any plug-in application.

Saving and restoring files for an Oracle database

The following procedures describe backing up and restoring data files for a system using an Oracle database with HP SIM. A user with Oracle Database Administrator (DBA) privileges must conduct the backup and restore processes.

Saving data files for use with Oracle

To save (back up) Oracle database files, use the following procedure:

Note: HP recommends stopping the HP SIM service to ensure that the discovery and data processes do not occur during the save; however, you can leave the HP SIM service running during the save process.

1. Using the file management utility of your choice, save the configuration files listed in Table 1. For each occurrence of <SIM>, substitute the actual path name where HP SIM is installed (such as `C:\Program Files\HP\System Insight Manager`).

Note: You must use a tool that preserves file permissions (such as the Windows Backup tool) while saving directories and files.

2. Open the <SIM>/config/database.props file and check the property value for hp.database.username. A user with Oracle Database Administrator (DBA) privilege must conduct the backup and restore process.
3. Save any existing user-supplied (custom) files contained in the HP SIM directory tree such as tool definition files (TDEFs), Management Information Bases (MIBs), login prompt, actions, etc.
4. Save the OpenSSH Keys from <OpenSSH Install path>\etc folder.
5. Save any custom support packs used by the Version Control Repository Manager (VCRM).
6. Save any data files corresponding to any plug-in utilities used with HP SIM. Refer to the documentation of the applicable plug-in utility for actual file names/locations.
7. Back up the Oracle data files (refer to Oracle documentation for detailed information).

Backing up the HP SIM database

1. Login to the Oracle Management server.
2. From the **Backup Management** menu, select **Backup** to access the Backup Wizard.
3. On the **Strategy Choice** page, select **Customize backup strategy**, and then click **Next**.
4. To back up the entire database, you must select **Entire database** on the **Backup Selection** page and then click **Next**.
5. Select **Full backup** in the **Backup Options** page.
6. Select either online backup or offline backup mode, and then click **Next**.
7. Select the default configuration.
8. In **Override the backup and retention policy** section, do not select any option and click **Next**.
9. Schedule the execution of the backup.
10. Select when to submit the job and whether to add it to the job library.

Restoring data files for use with Oracle.

1. If necessary, reinstall HP SIM as directed in the *HP Systems Insight Manager 5.3 Installation and Configuration Guide for Microsoft Windows systems* available at the following URL: <http://h18013.www1.hp.com/cpq-products/servers/management/hpsim/infolibrary.html>. If not performing a reinstallation of HP SIM, then proceed to step 5.

Note: You must reinstall HP SIM with the same user account that was used previously.

2. Reinstall the WMI mapper, OpenSSH (and previous keys used), and SMH components if needed.
3. Reinstall any backed up custom files (TDEFs, MIBs, login prompt, and other actions) under the HP SIM directory tree, and any custom support packs used by VCRM.

Note: The HP SIM installation procedure includes loading the VCRM on a Windows CMS.

4. Reinstall any plug-in utilities (and associated files and databases) used with HP SIM.
5. If it is running, stop the HP SIM Service, along with any HP SIM plug-in applications such as HP Performance Management Pack.
6. Reinstall Oracle as directed in Oracle documentation. For more information, see http://download-west.oracle.com/docs/cd/B19306_01/backup.102/b14192/toc/htm.
7. Using the file management tool of your choice, restore the directories and files listed in Table 2. For each occurrence of <SIM>, substitute the actual pathname where HP SIM is installed (such as C:\Program Files\HP\System Insight Manager).

Note: You must use a tool that preserves file permissions (such as the Windows Backup tool) while restoring directories and files.

Table 2: Configuration files to restore for Oracle

Directory or file	Description
<SIM>\config\ (see note)	Directory of configuration files
C:\hp\sslshare\	Shared openSSL certificate directory
<SIM>\logs\mx.log	Audit log file
<SIM>\patch	Program updates (required if you want to reinstall HP SIM), this might be empty
<SIM>\bin\servercert.pem	Certificate used by the Command Line Interface (CLI)
<SIM>\bin\clclientconfig.cfg	CLI configuration file
<SIM>\installpsp	(if existing)
<SIM>\swmaint	(if existing)
<SIM>\output	(optional) Contains job result output

8. Start the HP SIM service and any plug-in applications.

Restoring the database

To restore and recover the database, perform the following steps:

1. Login to the Oracle Management Server.
2. From the **Backup Management** menu, select **Recover** to access the Recovery Wizard.
3. On the **Operation Selection** page, select **Restore**, and then click **Next**.
4. Select **Entire Database**, and then click **Next**.
5. Select the default configuration.
6. Select the database to be restored and click **Finish**.

For more information

For additional information about HP SIM, visit www.hp.com/go/hpsim.

© 2006-2009 Hewlett-Packard Development Company, L.P. The information contained herein is subject to change without notice. The only warranties for HP products and services are set forth in the express warranty statements accompanying such products and services. Nothing herein should be construed as constituting an additional warranty. HP shall not be liable for technical or editorial errors or omissions contained herein.

466356-002, 01/2009

